

In C

This Year's Kisses

Lester Young / The Jazz Giants

Transcribed By
Ryoju Fukushima (Riyo)

Piano intro

4

A single staff of music in 4/4 time, marked 'Piano intro'. It consists of a solid black line across the staff, indicating a sustained piano texture.

A

E_b F_{mi}^7 G_{mi}^7 G_{b^o} F_{mi}^7 Bb^7

Musical staff for section A. It begins with a whole note E_b and F_{mi}^7 , followed by an eighth rest. The melody continues with eighth notes: G_{mi}^7 (quarter), G_{b^o} (quarter), F_{mi}^7 (quarter), Bb^7 (quarter), and F_{mi}^7 (quarter).

E_b C_{mi}^7 F_{mi}^7 Bb^7

Musical staff for section A continuation. It starts with a whole note E_b , followed by a quarter rest. The melody then features a triplet of eighth notes: C_{mi}^7 , F_{mi}^7 , and Bb^7 , followed by a quarter note F_{mi}^7 .

A'

E_b F_{mi}^7 G_{mi}^7 G_{b^o} F_{mi}^7 Bb^7

Musical staff for section A'. It begins with a whole note E_b and F_{mi}^7 , followed by an eighth rest. The melody continues with eighth notes: G_{mi}^7 (quarter), G_{b^o} (quarter), F_{mi}^7 (quarter), Bb^7 (quarter), and F_{mi}^7 (quarter).

E_b Bb_{mi}^7 E_b^7

Musical staff for section A' continuation. It starts with a whole note E_b , followed by a quarter rest. The melody then features a triplet of eighth notes: Bb_{mi}^7 , E_b^7 , and Bb_{mi}^7 , followed by a quarter note E_b^7 .

B

A_b Bb_{mi}^7 C_{mi}^7 Bb_{mi}^7 $A_b_{mi}^6$ Bb_{mi}^6 $A_b_{mi}^6/B$ $A_b_{mi}^6$

Musical staff for section B. It begins with a whole note A_b and Bb_{mi}^7 , followed by an eighth rest. The melody continues with eighth notes: C_{mi}^7 (quarter), Bb_{mi}^7 (quarter), $A_b_{mi}^6$ (quarter), Bb_{mi}^6 (quarter), $A_b_{mi}^6/B$ (quarter), and $A_b_{mi}^6$ (quarter).

G_{mi}^7 C_{mi}^7 F_{mi}^7 Bb^7

Musical staff for section B continuation. It starts with a whole note G_{mi}^7 , followed by a quarter rest. The melody then features eighth notes: C_{mi}^7 (quarter), F_{mi}^7 (quarter), Bb^7 (quarter), and a triplet of eighth notes: G_{mi}^7 , C_{mi}^7 , and F_{mi}^7 .

C Eb Fmi7 Gmi7 Gb° Fmi7 Bb7 Ab7

G7 C7 Fmi7 Bb7 Eb Fmi7 Bb7

Solo

P, Tb, and Tp solo

B2

Ab Bbmi7 Cm7 Bbmi7 Abmi6 Bbmi6 Abmi6/B Abmi6

Gmi7 Cm7 Fmi7 Bb7

C2

Eb Fmi7 Gmi7 Gbo Fmi7 Bb7 Ab7

G7 C7 Fmi7 Bb7 Eb Bb7 Eb

In Eb Alto Sax

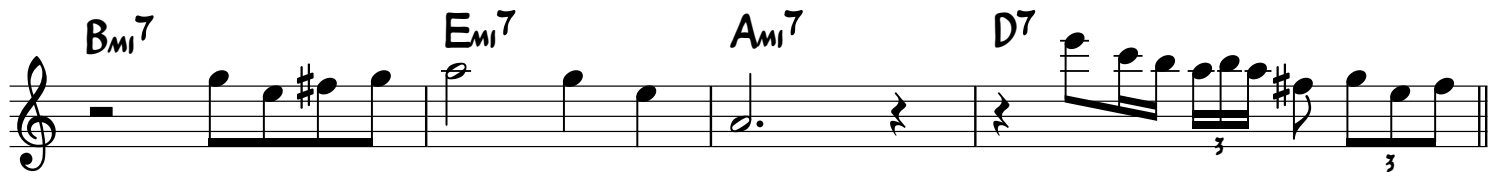
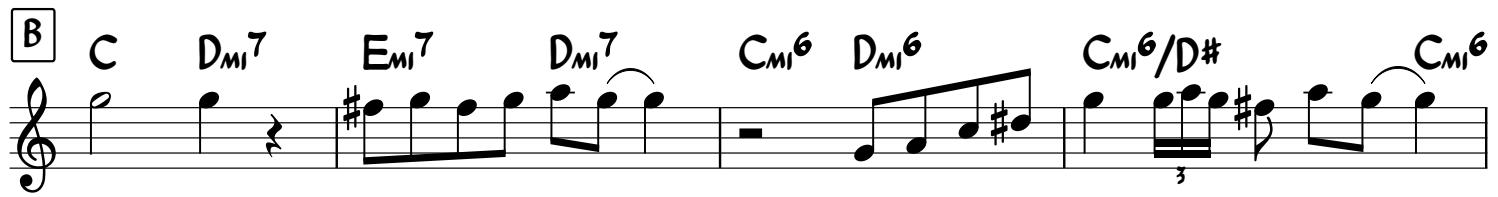
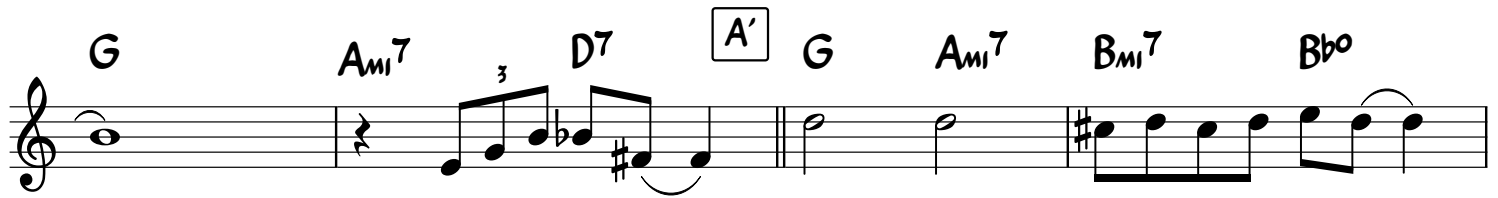
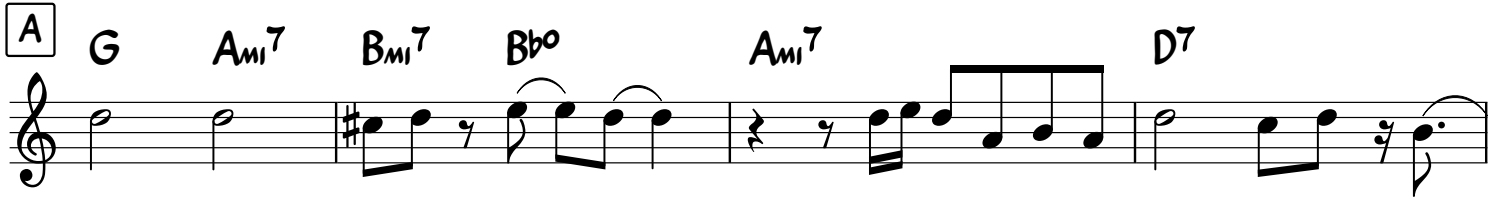
This Year's Kisses

Lester Young / The Jazz Giants

Transcribed By
Ryoju Fukushiro (Riyo)

Piano intro

4



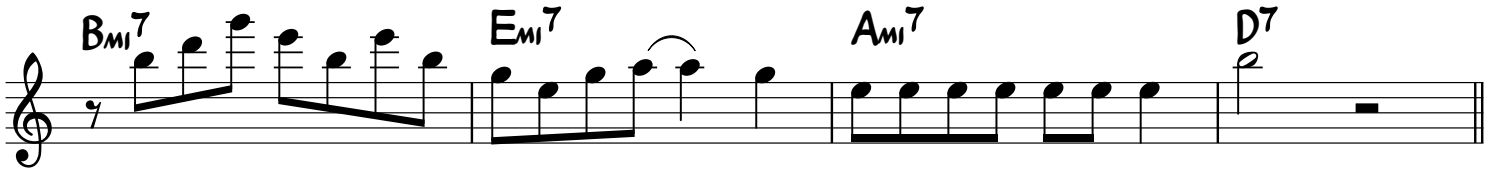
C G A_{mi}⁷ B_{mi}⁷ B^b A_{mi}⁷ D⁷ C⁷

B⁷ E⁷ A_{mi}⁷ D⁷ G A_{mi}⁷ D⁷

Solo



P, Tb, and Tp solo



In C

This Year's Kisses

Irving Berlin

Piano intro

The piano introduction consists of two staves of music in 4/4 time. The key signature has two flats (B-flat and E-flat). The first staff features a treble clef with a piano dynamic marking. It begins with a whole rest, followed by a triplet of eighth notes (F4, G4, A4), then a quarter note (B4), a quarter note (C5), and a dotted quarter note (B4). The second staff features a bass clef with a piano dynamic marking. It begins with a whole rest, followed by a triplet of eighth notes (F3, G3, A3), then a quarter note (B3), a quarter note (C4), and a dotted quarter note (B3). Both staves conclude with a double bar line.

A Eb Fmi7 Gmi7 Gb0 Fmi7 Bb7

Musical staff for section A in the treble clef. It begins with a whole rest, followed by a quarter note (Eb), a quarter note (F), a quarter note (G), and a quarter note (Gb). The second measure contains a quarter note (F), a quarter note (G), a quarter note (A), and a quarter note (B). The third measure contains a quarter note (F), a quarter note (G), a quarter note (A), and a quarter note (B). The fourth measure contains a quarter note (F), a quarter note (G), a quarter note (A), and a quarter note (B). The piece ends with a double bar line.

Eb Cmi7 Fmi7 Bb7

Musical staff for section A in the treble clef. It begins with a whole rest, followed by a quarter note (Eb), a quarter note (F), a quarter note (G), and a quarter note (A). The second measure contains a quarter note (F), a quarter note (G), a quarter note (A), and a quarter note (B). The third measure contains a quarter note (F), a quarter note (G), a quarter note (A), and a quarter note (B). The fourth measure contains a quarter note (F), a quarter note (G), a quarter note (A), and a quarter note (B). The piece ends with a double bar line.

A' Eb Fmi7 Gmi7 Gb0 Fmi7 Bb7

Musical staff for section A' in the treble clef. It begins with a whole rest, followed by a quarter note (Eb), a quarter note (F), a quarter note (G), and a quarter note (Gb). The second measure contains a quarter note (F), a quarter note (G), a quarter note (A), and a quarter note (B). The third measure contains a quarter note (F), a quarter note (G), a quarter note (A), and a quarter note (B). The fourth measure contains a quarter note (F), a quarter note (G), a quarter note (A), and a quarter note (B). The piece ends with a double bar line.

Eb Bbmi7 Eb7

Musical staff for section A' in the treble clef. It begins with a whole rest, followed by a quarter note (Eb), a quarter note (F), a quarter note (G), and a quarter note (A). The second measure contains a quarter note (F), a quarter note (G), a quarter note (A), and a quarter note (B). The third measure contains a quarter note (F), a quarter note (G), a quarter note (A), and a quarter note (B). The fourth measure contains a quarter note (F), a quarter note (G), a quarter note (A), and a quarter note (B). The piece ends with a double bar line.

B $A\flat$ $B\flat_{mi}7$ $C_{mi}7$ $B\flat_{mi}7$ $A\flat_{mi}6$ $B\flat_{mi}6$ $A\flat_{mi}6/B$ $A\flat_{mi}6$

$G_{mi}7$ $C_{mi}7$ $F_{mi}7$ $B\flat7$

C $E\flat$ $F_{mi}7$ $G_{mi}7$ $G\flat0$ $F_{mi}7$ $B\flat7$ $A\flat7$

$G7$ $C7$ $F_{mi}7$ $B\flat7$ $E\flat$ $F_{mi}7$ $B\flat7$

Solo

E^b

F_{mi}⁷

G_{mi}⁷

G^{b0}

F_{mi}⁷

B^{b7}



1.

E^b

C_{mi}⁷

F_{mi}⁷

B^{b7}

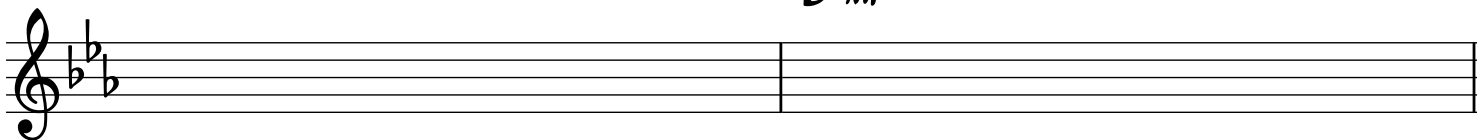


2.

E^b

B^b_{mi}⁷

E^{b7}



A^b

B^b_{mi}⁷

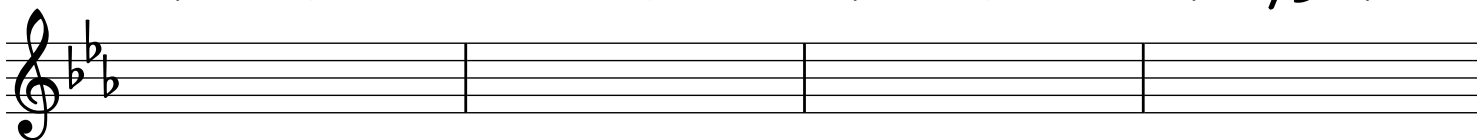
C_{mi}⁷

B^b_{mi}⁷

A^b_{mi}⁶

B^b_{mi}⁶

A^b_{mi}⁶/B A^b_{mi}⁶



G_{mi}⁷

C_{mi}⁷

F_{mi}⁷

B^{b7}



E^b

F_{mi}⁷

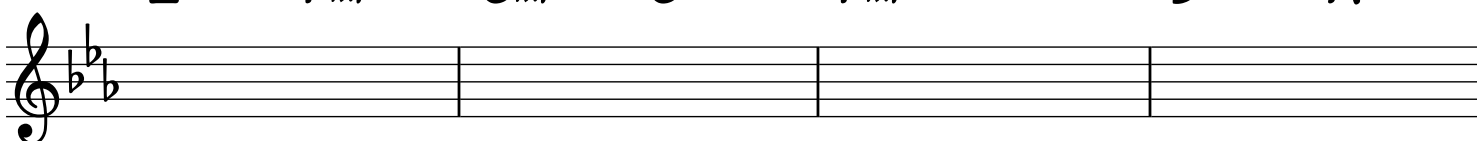
G_{mi}⁷

G^{b0}

F_{mi}⁷

B^{b7}

A^{b7}



G⁷

C⁷

F_{mi}⁷

B^{b7}

E^b

E^{b7} to \emptyset



Coda B2 Ab Bb_{mi}⁷ C_{mi}⁷ Bb_{mi}⁷ Ab_{mi}⁶ Bb_{mi}⁶ Ab_{mi}⁶/B Ab_{mi}⁶

G_{mi}⁷ C_{mi}⁷ F_{mi}⁷ Bb⁷

C2 Eb F_{mi}⁷ G_{mi}⁷ Gb^o F_{mi}⁷ Bb⁷ Ab⁷

G⁷ C⁷ F_{mi}⁷ Bb⁷ Eb Bb⁷ Eb

The fake melody played by Lester Young and the piano intro played by Teddy Willson are from "The Jazz Giants '56"

Transcribed by Ryoju Fukushima (Riyo)
<https://ryojufukushiro.wordpress.com>